



MATH AND SCIENCE  
ACADEMY



# Expansion

# Town Hall

## September 18, 2024

## 6:30-7:30



# Agenda

Our Mission and Vision

---

Expansion Team Goals

---

Guiding Change

---

Property Update

---

Due Dilligence Completed

City Submission

---

Project Timing

---

Elementary Development

---

Next Steps

---

# Our Mission and Vision



## Mission

To be an innovative, sustainable model of academic excellence for all students that creates well-rounded, lifelong learners and global citizens.

## Vision

We provide accelerated and inclusive curricula and instruction in all subjects, with an emphasis on math and science.

# Expansion Team Goals

**Create an environment that is:**

- **Welcoming**
- **Inclusive**
- **State-of-the art**
- **Healthy**
- **Collaborative for community**
- **Innovative**
- **Transformative**
- **Inspirational**
- **Creative**
- **Flexible**
- **Forward-thinking**
- **Encompassing of the MSA Mission and Vision**



# Guiding Change

How do we expand in a fiscally responsible way that maintains our culture? Our expansion will allow us to grow our vision for equity, innovation, and sustainability while helping students reach high standards?

## Why are we expanding?

- In demand program
- More curricular opportunities
- More space is needed
- Finances



## Desired Results

- One campus 6-12
- Expanded science, math, and humanities offerings
- Better facilities
- Higher student retention
- Attract/retain quality, innovative, diverse staff
- Financial stability
- Offer a K-12 experience
- Community sense of belonging
- Remain in ISD 833

# Property Exploration

- **We originally started with 10 properties identified in ISD 833**
- **Several were eliminated by the Expansion Committee or city planning commissions**
- **This spring we had three potential properties**
- **Discussions with owners and evaluation of property characteristics have led us a property in ISD 833 located in southern Woodbury**

# Property Selection

The property we have selected is at the corner of Mile Drive and Bailey Road. It is currently a corn field.



# Due Diligence:

- Completed:
  - Soil Borings
  - Environmental Testing
  - Survey
  - Land Use Application
- In Progress:
  - Traffic Study
  - Comprehensive Plan Amendment
  - Neighborhood Meeting Planning
  - Department of Labor and Industry Application



# Due Diligence:

- Washington County and City of Woodbury:
  - The city and the county have been very responsive and helpful
  - They are meeting this week to discuss the traffic counts and make a recommendation on traffic improvement needs
  - Traffic plan developed before Neighborhood Meeting
- Comprehensive Plan Amendment:
  - Met Council Administrative approval up to 60 days
  - After the Neighborhood Meeting

# Timing of Project

## June

- Property Selection

## July

- Began drawings
- Engagement with City of Woodbury

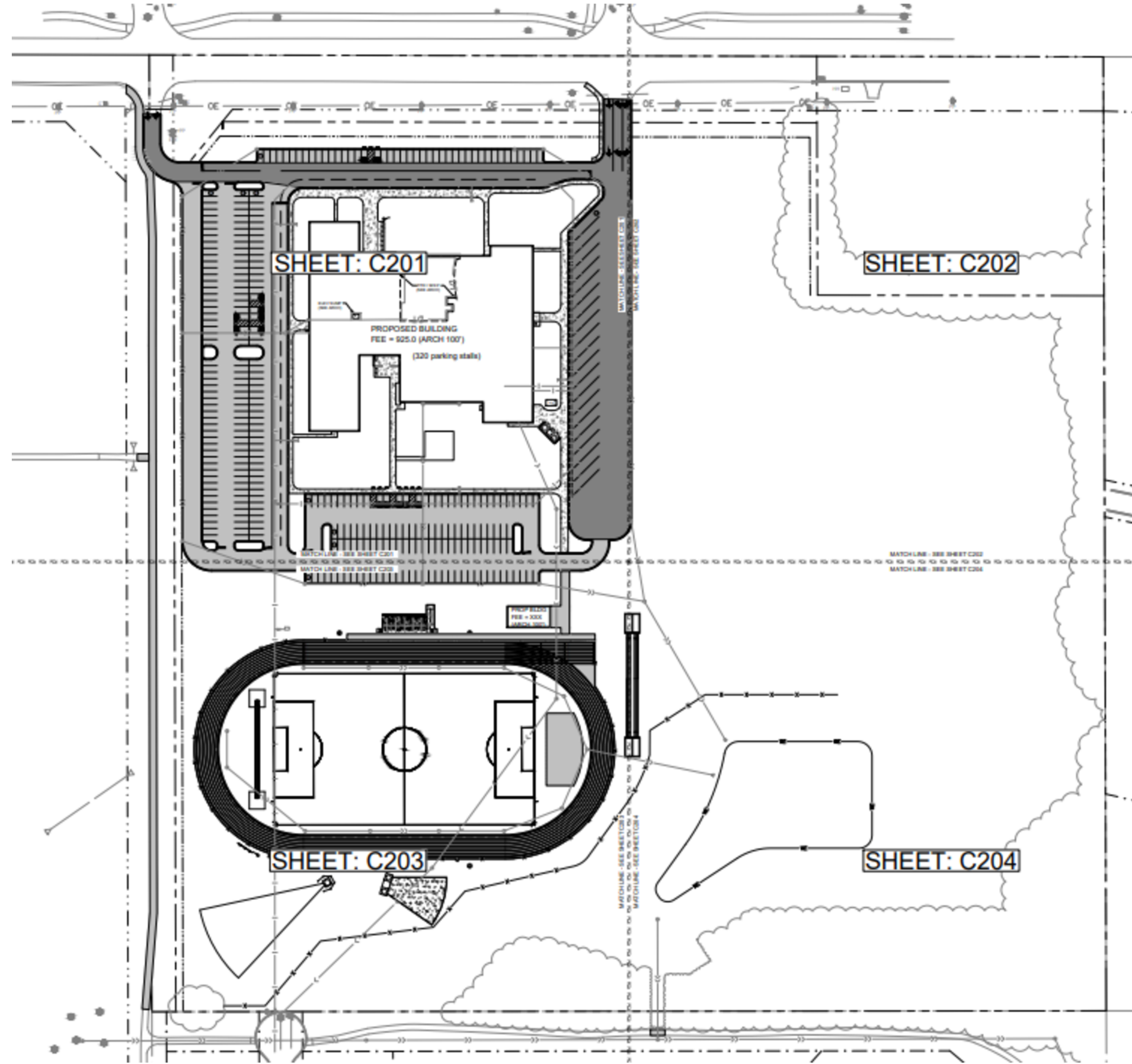
## August

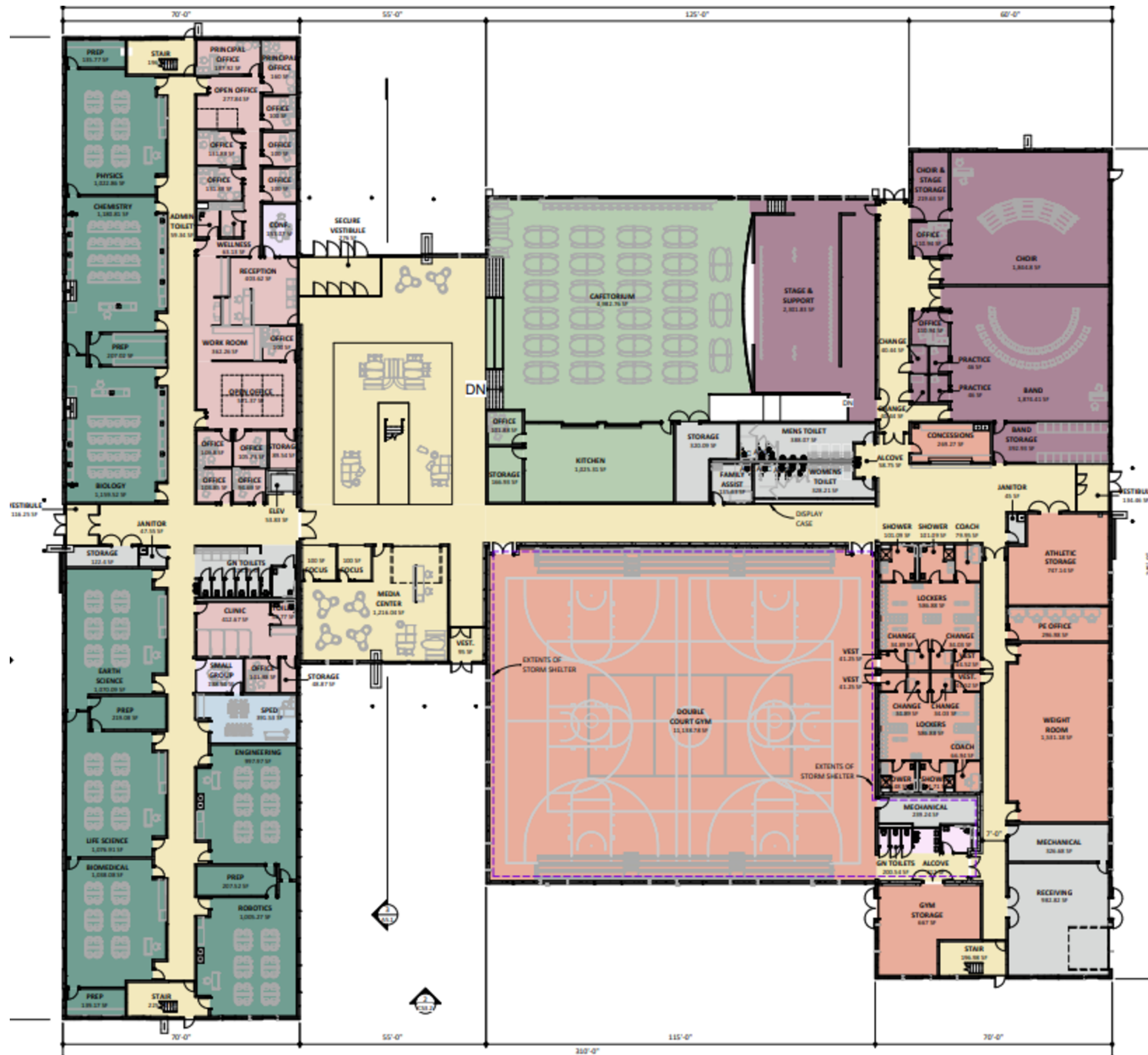
- Due Diligence
- Weekly Bonding and City Meetings

## September

- Revise the schedule based on timing of approvals







Education/Community Legend

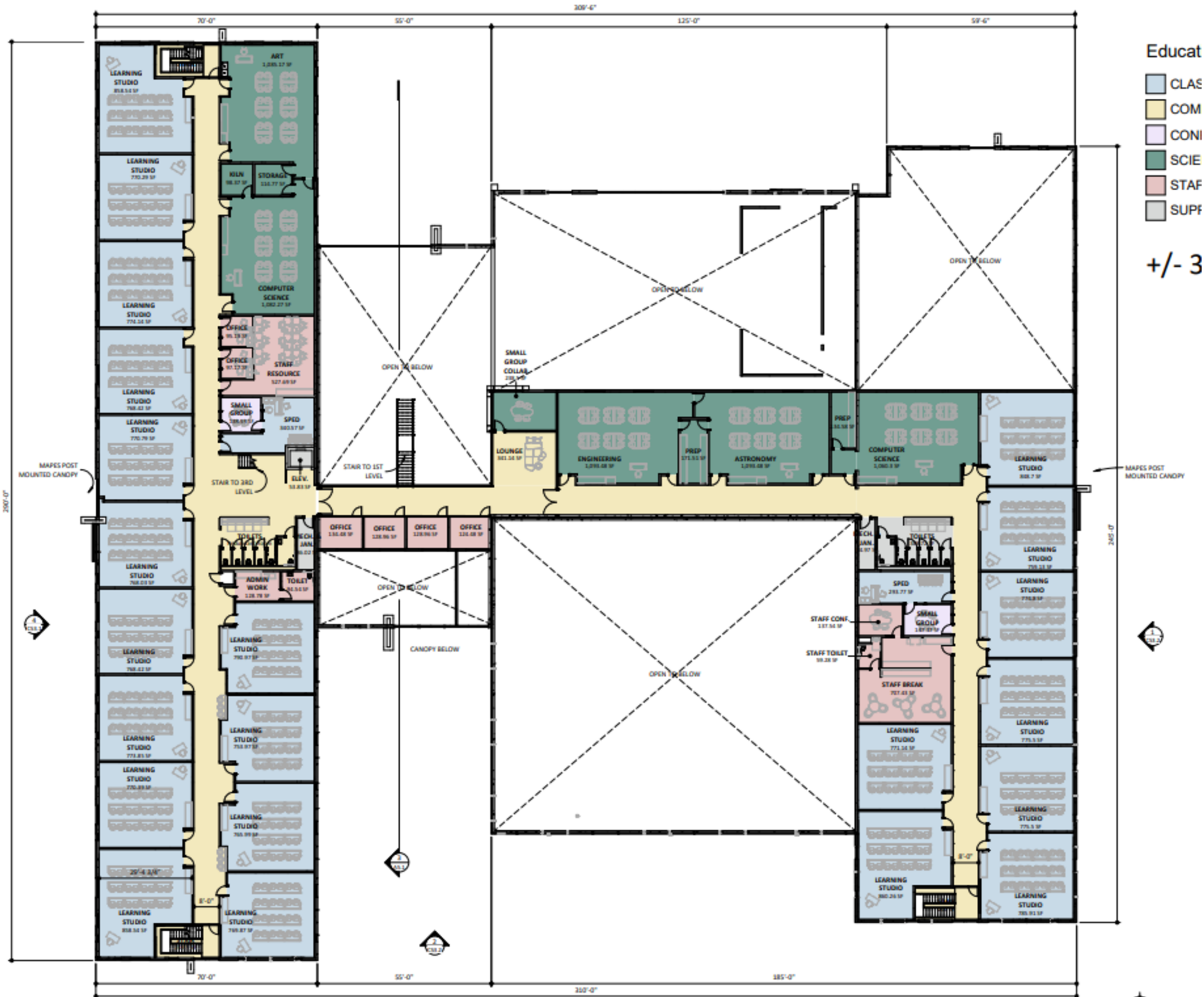
- ATHLETICS
- CLASSROOM
- COMMON AREA
- CONFERENCE ROOM/TRAINING SPACE/CLASSROOM
- FOOD/DINING
- MUSIC
- OPEN OFFICE
- SCIENCE & STEM
- STAFF/ADMIN
- SUPPORT SPACE

+/- 67,450 GSF

1 FIRST LEVEL FLOOR PLAN  
 CS2.1 1/16" = 1'-0"

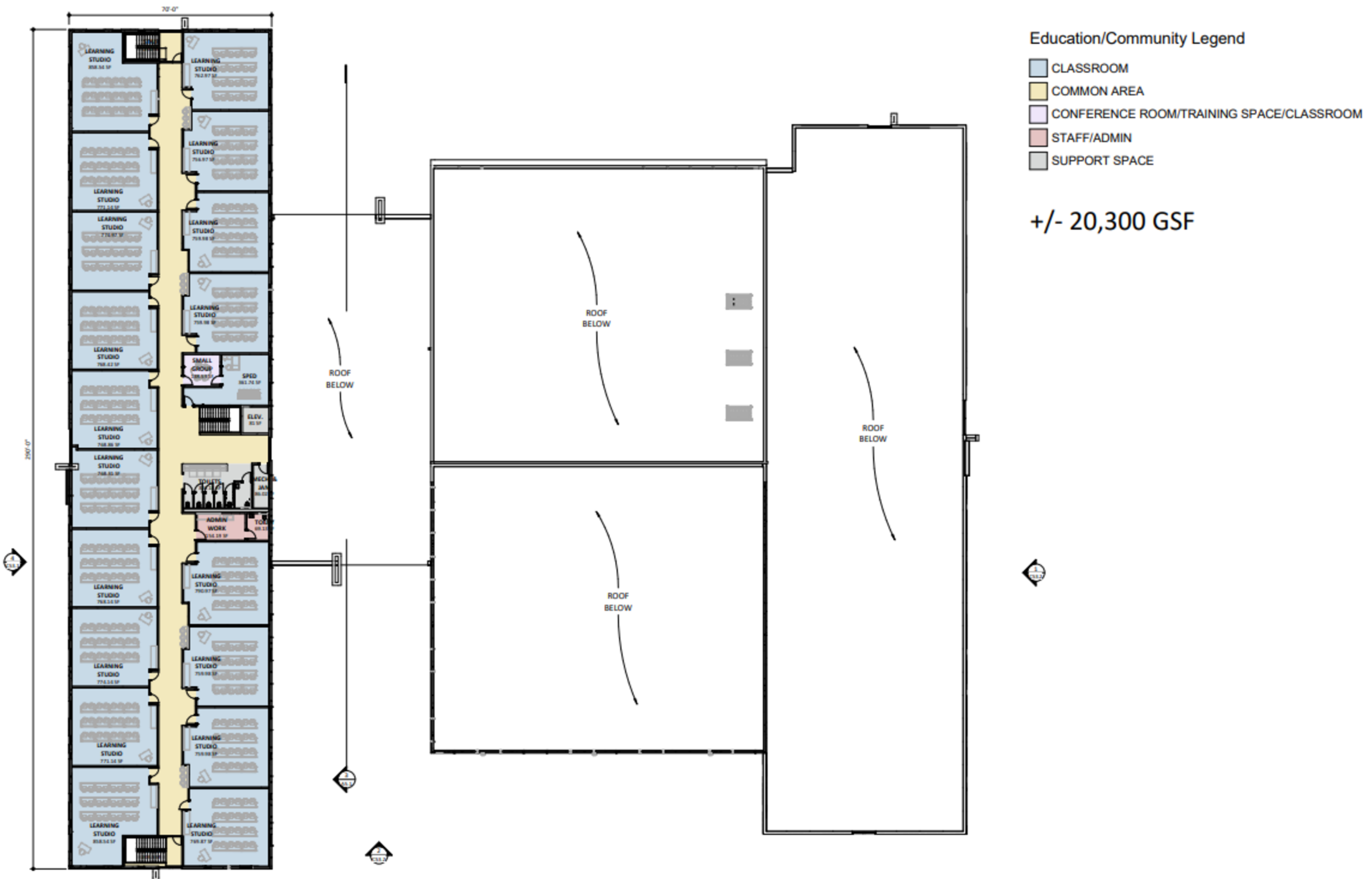


C



1 SECOND LEVEL FLOOR PLAN  
 CS2.2 1/16" = 1'-0"





- Education/Community Legend
- CLASSROOM
  - COMMON AREA
  - CONFERENCE ROOM/TRAINING SPACE/CLASSROOM
  - STAFF/ADMIN
  - SUPPORT SPACE

+/- 20,300 GSF

1 THIRD LEVEL FLOOR PLAN  
 CS2.3 1/16" = 1'-0"



# Elementary Launch

- **Proposed Fall 2026**
- **Designing an elementary advisory group starts in October**
- **Currently have 175 families interested in our elementary program**
- **Elementary Family Meetings November 13 and January 9**



# **Elementary Program**

**Elementary Curriculum will have:**

- **STEM programming**
- **Problem-based math curriculum**
- **Spanish enrichment**
- **Art**
- **Music - Instrumental Music in grade 4 or 5**

**Elementary program will allow students to begin the Math and Science Academy in kindergarten**

# Questions and Comments